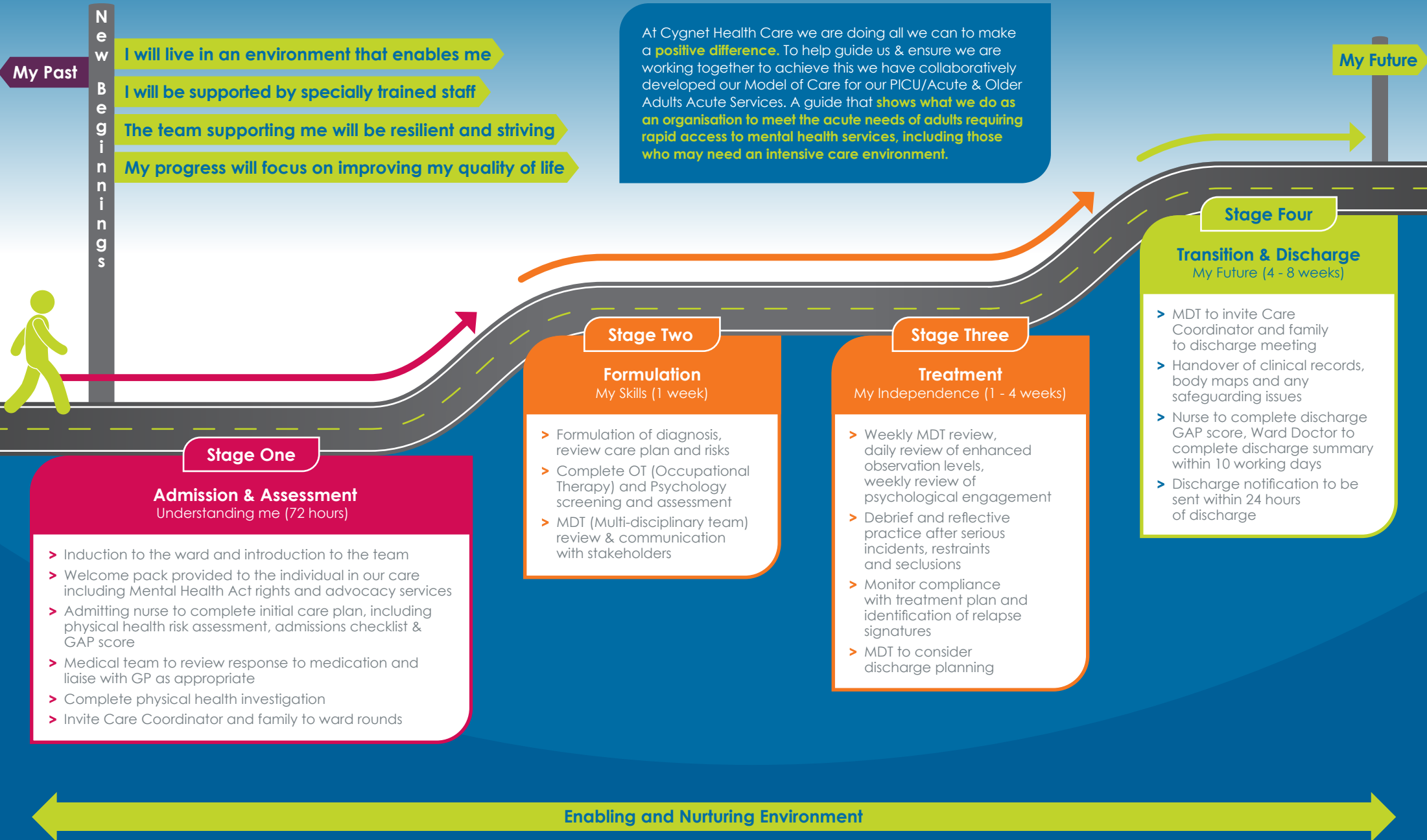


Model of Care for our PICU/Acute & Older Adults Acute Services



My Past

New Beginnings

My Future

- I will live in an environment that enables me
- I will be supported by specially trained staff
- The team supporting me will be resilient and striving
- My progress will focus on improving my quality of life

At Cynet Health Care we are doing all we can to make a **positive difference**. To help guide us & ensure we are working together to achieve this we have collaboratively developed our Model of Care for our PICU/Acute & Older Adults Acute Services. A guide that **shows what we do as an organisation to meet the acute needs of adults requiring rapid access to mental health services, including those who may need an intensive care environment.**

Stage One

Admission & Assessment Understanding me (72 hours)

- > Induction to the ward and introduction to the team
- > Welcome pack provided to the individual in our care including Mental Health Act rights and advocacy services
- > Admitting nurse to complete initial care plan, including physical health risk assessment, admissions checklist & GAP score
- > Medical team to review response to medication and liaise with GP as appropriate
- > Complete physical health investigation
- > Invite Care Coordinator and family to ward rounds

Stage Two

Formulation My Skills (1 week)

- > Formulation of diagnosis, review care plan and risks
- > Complete OT (Occupational Therapy) and Psychology screening and assessment
- > MDT (Multi-disciplinary team) review & communication with stakeholders

Stage Three

Treatment My Independence (1 - 4 weeks)

- > Weekly MDT review, daily review of enhanced observation levels, weekly review of psychological engagement
- > Debrief and reflective practice after serious incidents, restraints and seclusions
- > Monitor compliance with treatment plan and identification of relapse signatures
- > MDT to consider discharge planning

Stage Four

Transition & Discharge My Future (4 - 8 weeks)

- > MDT to invite Care Coordinator and family to discharge meeting
- > Handover of clinical records, body maps and any safeguarding issues
- > Nurse to complete discharge GAP score, Ward Doctor to complete discharge summary within 10 working days
- > Discharge notification to be sent within 24 hours of discharge

Enabling and Nurturing Environment