

Mental Health Rehabilitation and Recovery Services Outcomes



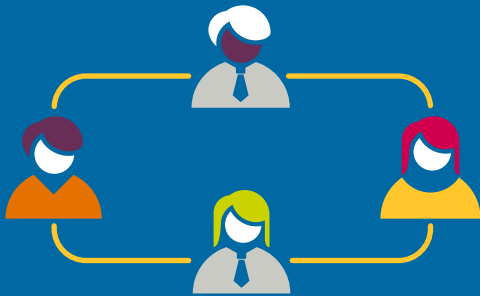
Introduction



The main aim within our mental health rehabilitation and recovery services is to make a positive difference to the lives of the individuals we support.



We enable service users to build essential community links, supporting their re-integration into the wider community through partnership working.



Our model of care is based on an integrated approach. Families, commissioners, service users and carers are all involved in the rehabilitation and recovery.

608

We support **608** individuals across **31** Mental Health Rehabilitation and Recovery Services

88%



88% of our services are rated 'Good' or 'Outstanding' with our quality regulators

Outstanding ☆

Cygnets Fountains, Lancashire
Cygnets Sherwood House, Nottinghamshire



Our services support those who are experiencing complex mental health difficulties and may require specialist treatment programmes.



All our environments offer high staffing ratios, skill development opportunities and vocational development in a safe, welcoming and nurturing environment, enabling each individual to flourish on their journey.



When the time is right, we also provide community rehabilitation, which provides increased independence, and a more outward-looking community based programme for those requiring additional support before full social reintegration.

Our service user profile



Age Range:
18+



Gender:
Male & Female



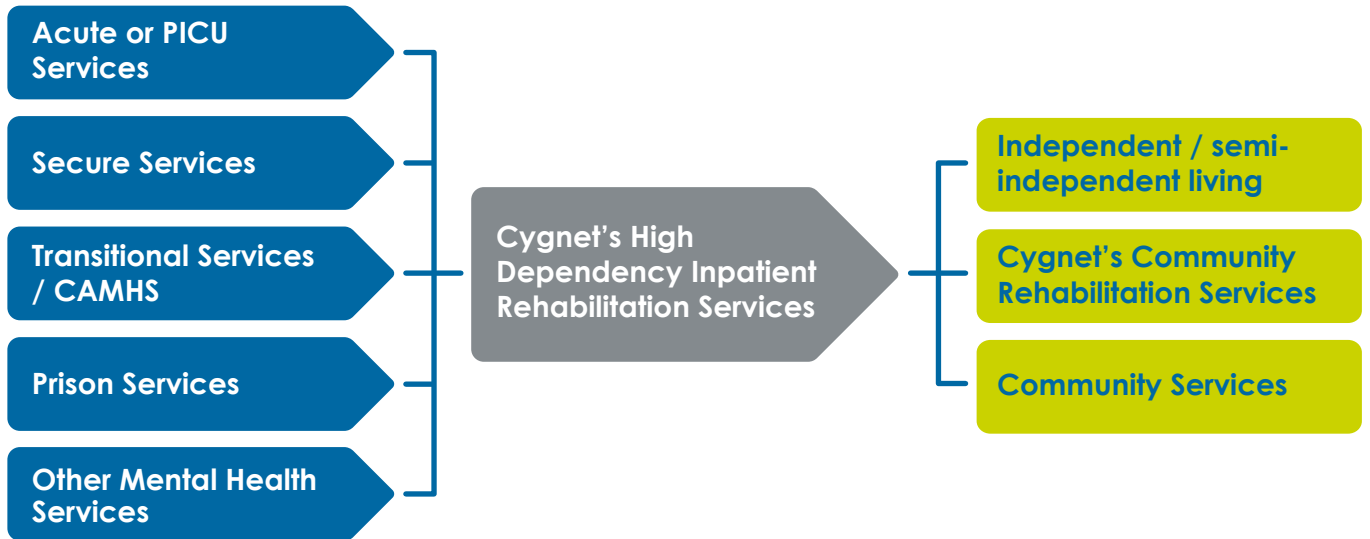
Mental Health Act Status:
Detained Informal

- > Primary diagnosis of mental illness with:
 - Complex comorbidities
 - Substance, drug and alcohol abuse
 - Treatment resistance
 - Behaviours that challenge
- > Typical diagnoses: schizophrenia, schizoaffective disorder, bipolar affective disorder or depression
- > May have secondary diagnoses of mild learning disability, autism spectrum disorder or personality disorder
- > Aiming for a return to community or community-based care
- > History of sexual abuse or domestic violence
- > May have a forensic history and/or be stepping down from secure services
- > May have a history of repeated acute admissions

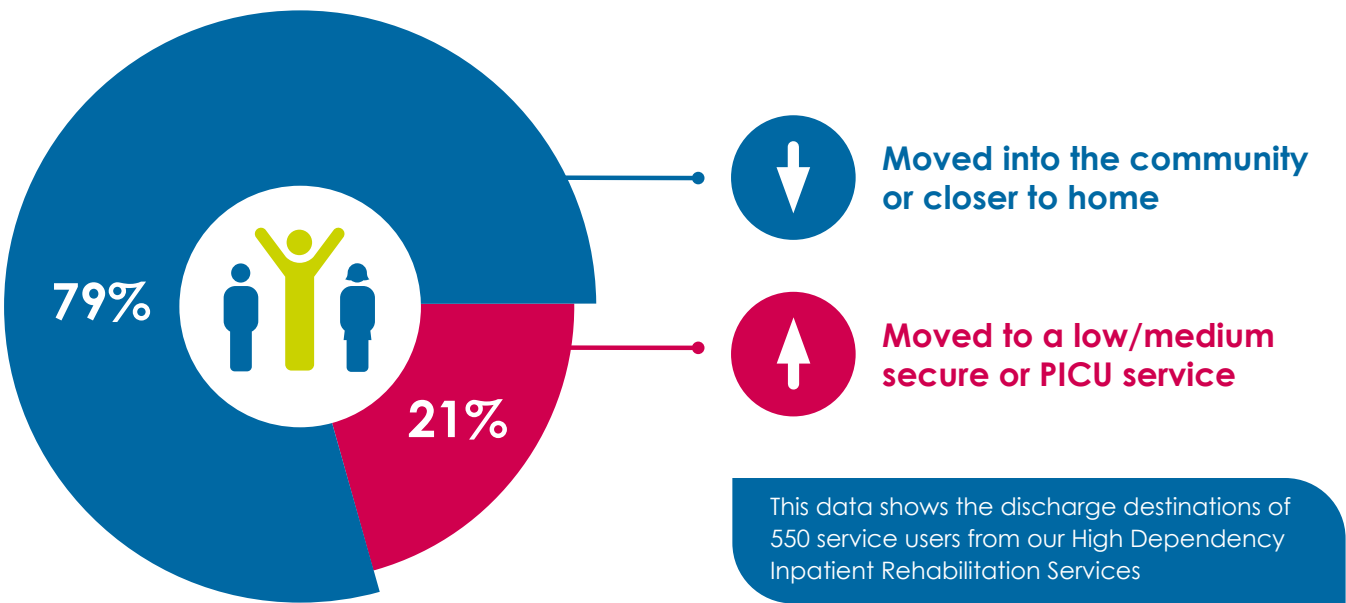
Our model of care



Our care pathways



Discharge destinations



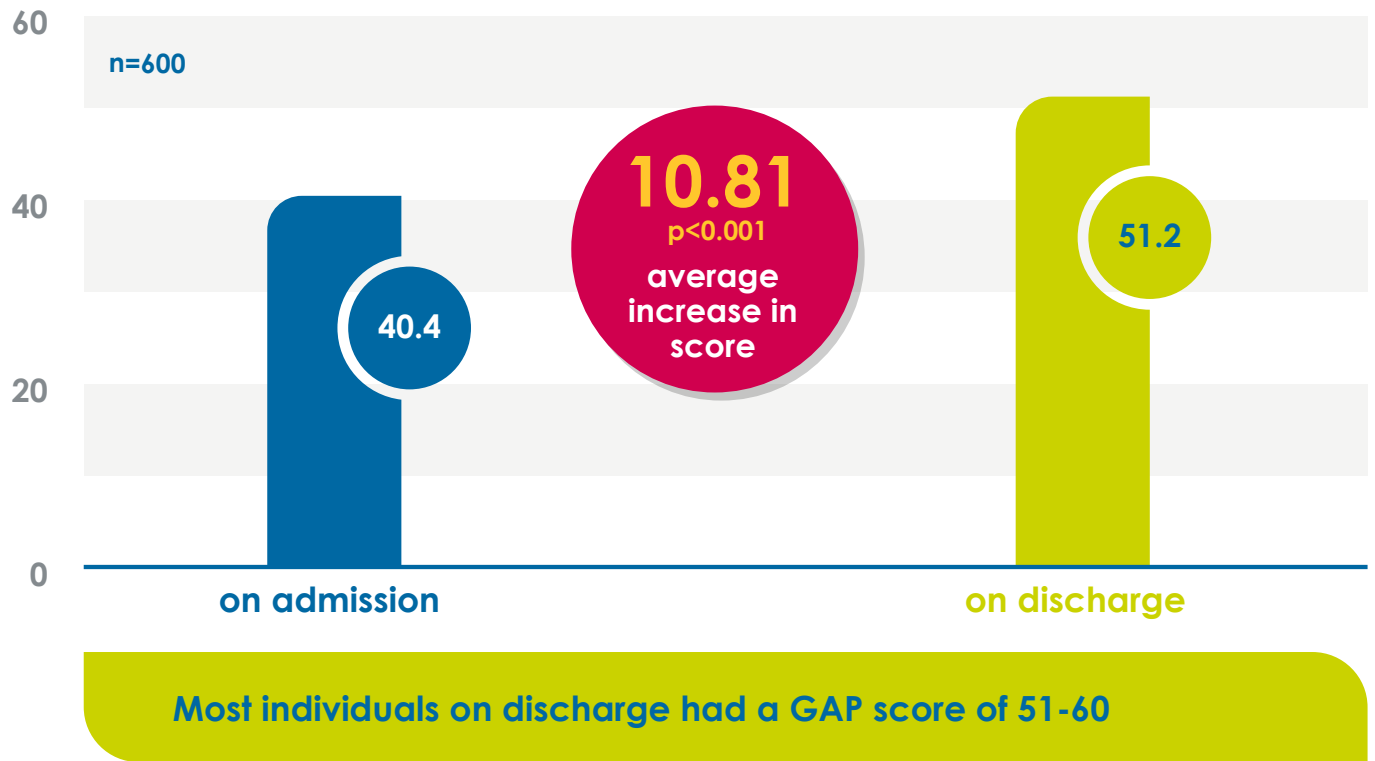
79%

of the individuals discharged from our High Dependency Inpatient Rehabilitation Services were able to move closer to home or step down along their care pathway into the community

Global Assessment of Progress (GAP)

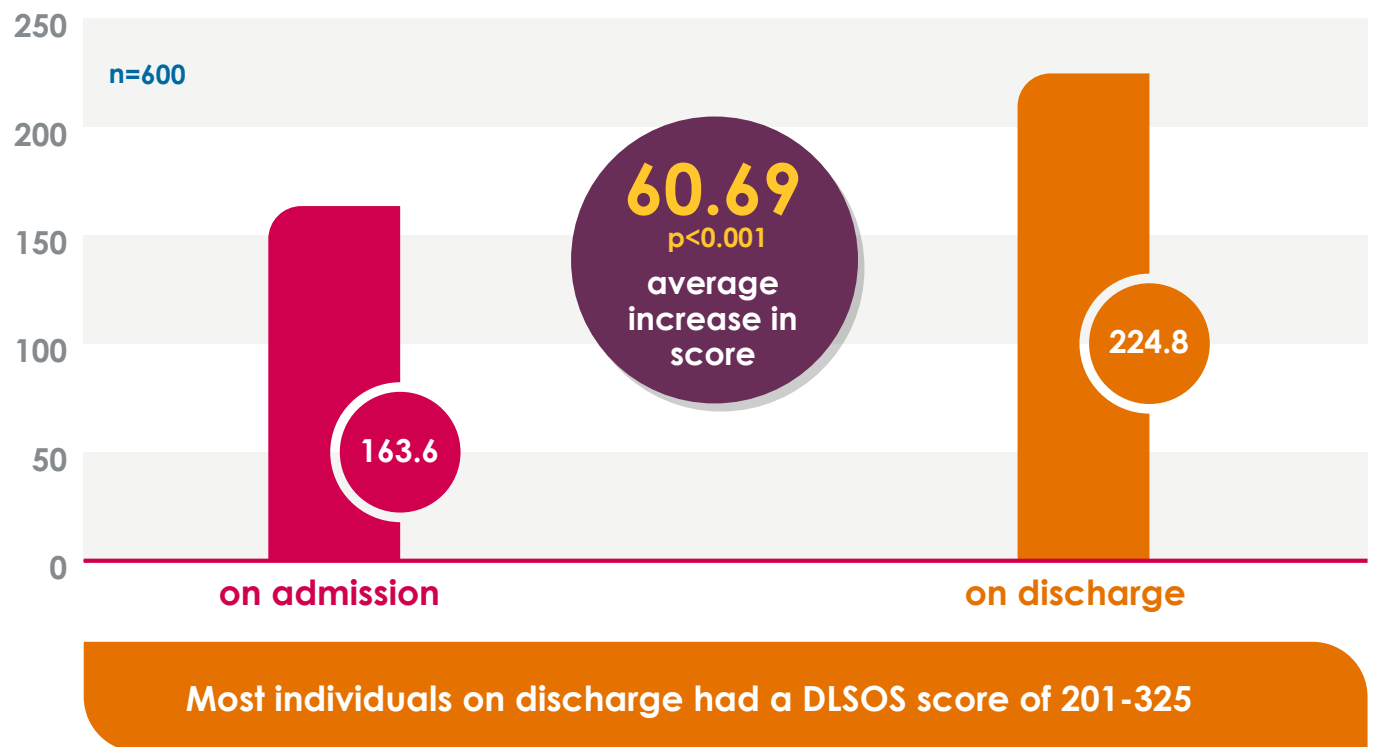
The Global Assessment of Progress (GAP) is our specialist outcome tool used within our mental health rehabilitation and recovery services. The tool allows us to measure an individual's progress throughout their

placement, plot the positive developments, setbacks and changes in wellbeing but also identify the warning signs of any possible deterioration, whilst informing care planning and being transparent about future risks.



Daily Living Skills Observation Scale (DLSOS)

DLSOS tracks functionality and the ability to successfully live an independent life in the community.

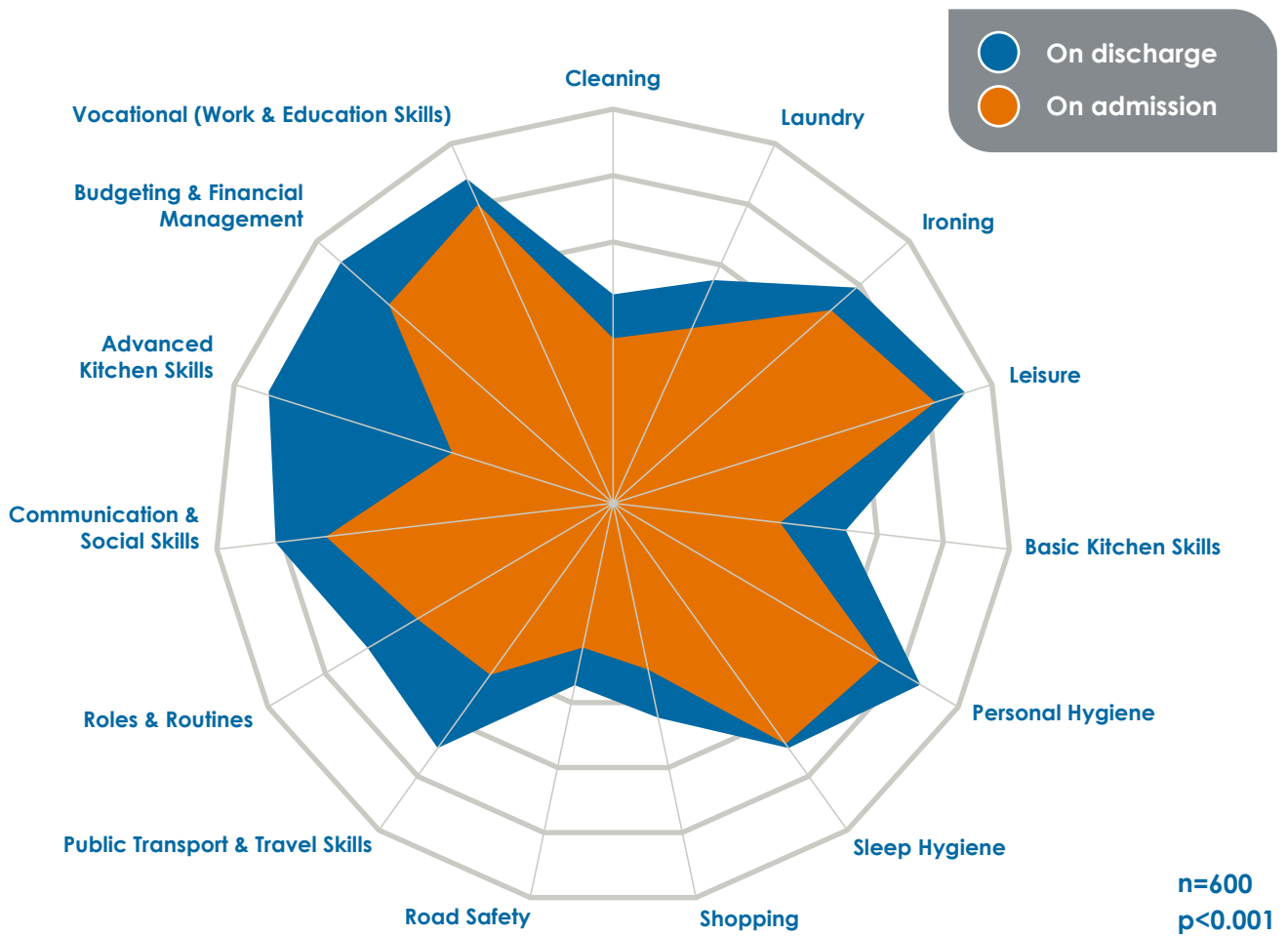


*Data and graphs relate to 2019 data

Daily living skillset

Average daily living skillset scores on admission and discharge

Service users are measured against 15 areas of function such as hygiene, budgeting and road safety. The graph below shows a cohort of 600 service users had improved their daily living skills on discharge.



Service user satisfaction results

81%



of service users are happy with their environment as well as feeling safe and comfortable



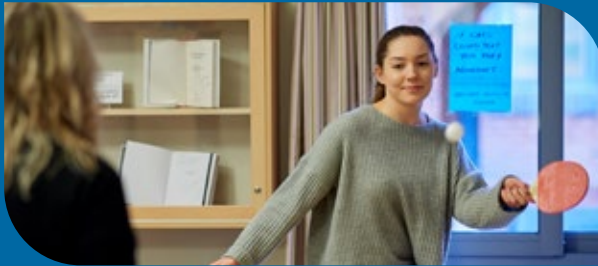
89%

of individuals felt that staff are polite and approachable and that they are treated with respect



82%

of service users said that they are able to have their say and are involved in their treatment and care plan



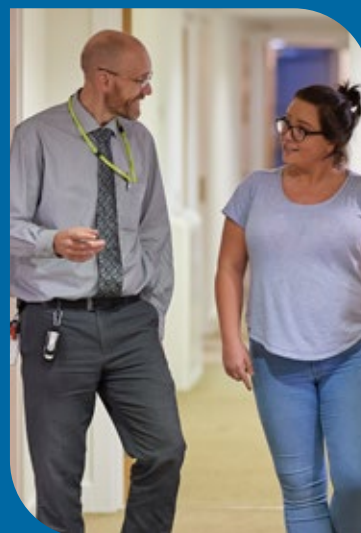
82%



of individuals are able to take part in meaningful activities and continue with their hobbies

91%

know how to contact and access an advocate



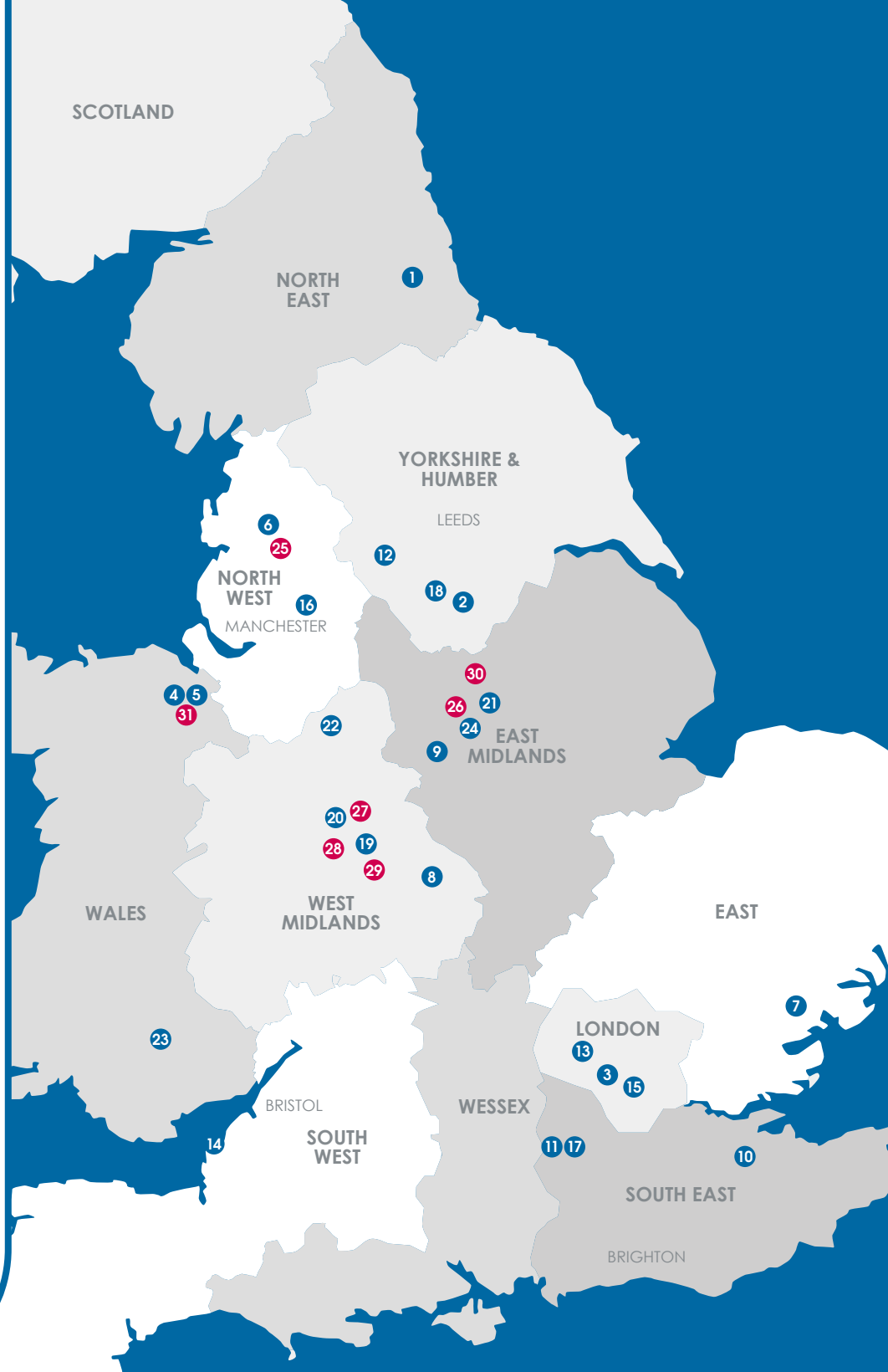
Our specialist services by region

High Dependency Inpatient Rehabilitation

- 1 Cygnet Appletree, County Durham
- 2 Cygnet Aspen House, South Yorkshire
- 3 Cygnet Churchill, London
- 4 Cygnet Delfryn House, North Wales
- 5 Cygnet Delfryn Lodge, North Wales
- 6 Cygnet Fountains, Lancashire
- 7 Cygnet Hospital Colchester, Essex
- 8 Cygnet Hospital Coventry, Coventry
- 9 Cygnet Hospital Derby, Derbyshire
- 10 Cygnet Hospital Maidstone, Kent
- 11 Cygnet Hospital Woking, Surrey
- 12 Cygnet Lodge Brighouse, West Yorkshire
- 13 Cygnet Lodge Kenton, London
- 14 Cygnet Lodge Kewstoke, Weston-super-Mare
- 15 Cygnet Lodge Lewisham, London
- NEW** 16 Cygnet Lodge Salford, Manchester
- 17 Cygnet Lodge Woking, Surrey
- 18 Cygnet Oaks, South Yorkshire
- 19 Cygnet Raglan House, Smethwick
- 20 Cygnet Sedgley House & Cygnet Sedgley Lodge, Wolverhampton
- 21 Cygnet Sherwood House, Nottinghamshire
- 22 Cygnet St Augustine's, Staffordshire
- 23 Cygnet St Teilo House, South Wales
- 24 Cygnet Storthfield House, Derbyshire

Community Rehabilitation

- 25 1 Vincent Court, Lancashire
- 26 15 The Sycamores, Derbyshire
- 27 12 Woodcross Street, Wolverhampton
- 28 20A & 20B Turls Hill Road, Dudley
- 29 45 Portland Road, Birmingham
- 30 Malborn and Teroan, Nottinghamshire
- 31 Rhyd Alyn, North Wales



For more information or to make a referral please:

📞 0808 164 4450

✉️ chcl.referrals@nhs.net

or contact your regional Business Relationship Manager

We are able to take referrals
24 hours a day,
seven days a week



 @cygnethealth

 /cygnethealthcare

 /company/cygnet-health-care

www.cygnethealth.co.uk